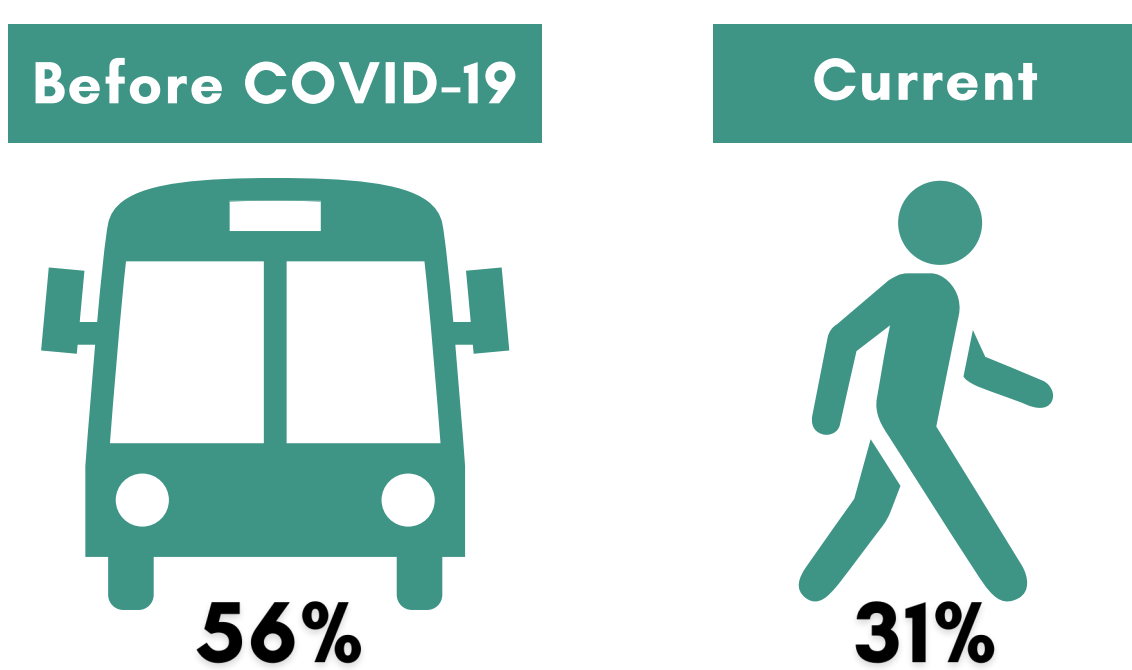


INSIGHTS FROM THE PILOT

Which mode of transport do you use most frequently to travel within your city?

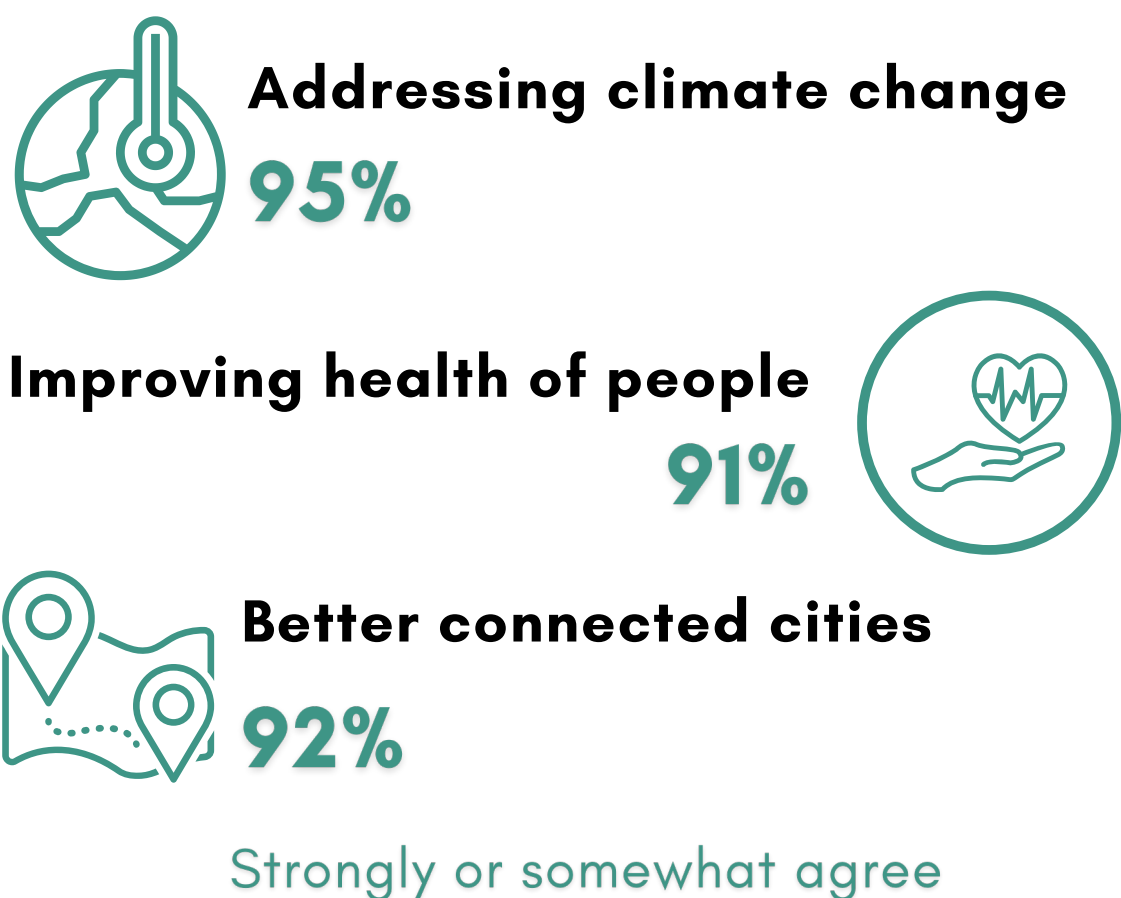


Reasons for choice in mode of transport

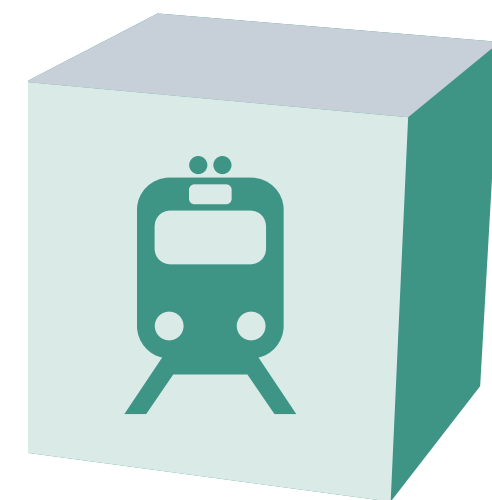
Before COVID-19		Current
330	It's better for the environment	272
292	To save money	223
283	To save time	229
142	Health	218
24	Hygiene	179

out of 555

Transforming mobility would play an important role in



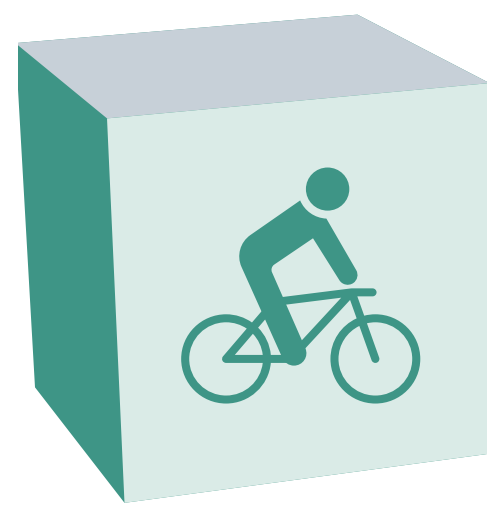
40% of respondents view transport and mobility in their city completely or somewhat sustainable



DEMOGRAPHICS

- 555 Responses
- Age: 18-35
- 8 Cities: Madrid, Zaragoza, Genoa, Milan, Berlin, Frankfurt, Leuven, Brussels

76% of respondents consider their daily travel choices completely or somewhat sustainable



#EUSUSTAINABLEMOBILITY

